

WTX *MicroStream*

First Multiroom Plug & Play
Audiophile Streamer



advance
acoustic

What is the WTX-MicroStream

The WTX-Microstream is an innovative wireless HiFi streamer which can be used with any amplifier, HiFi system, soundbar, home theater into your home wifi network. This system is multiroom. You can play your own music (PC/MAC, NAS), enjoy streaming services like Spotify, Tidal, Qobuz, etc... or radio service. The WTX-Microstream has an open interface with upgradable capability for future services and evolutions. Android and IOS apps will be available soon.

What you will find in the gift box

- The WTX MicroStream x1
- The power adapter x1
- The EC plug x1
- The UK plug x1
- The US plug x1



Interface

Wi-Fi led indicator

WPS button for association



Power supply



Left channel

To plug on your HiFi, active speaker, soundbar...

Right channel

Download your App / Android or Apple

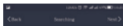
- To control your WTX-Microstreamer, please download on the App Store (if you are using Apple devices) or on Google Play (if you are using an Android device).



The name of the App is ADVANCE PLAYSTREAM

How to connect your WTX MicroStream with WPS

- Make sure your phone connect to your Wi-Fi home network.
- Run ADVANCE PLAYSTREAM App and choose Add Device.
- Type your password of your router in ADVANCE PLAYSTREAM App.
- Press WPS button on WTX MicroStream

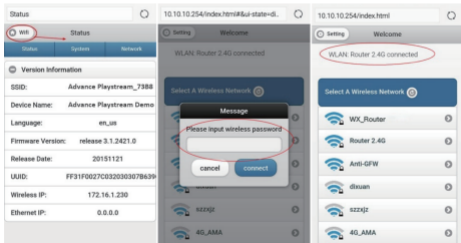


Press the WPS button to configure network



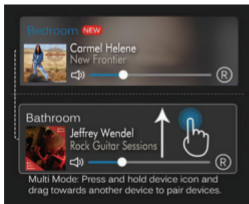
How to connect your WTX MicroStream without WPS

- Enter "Setting" ->"WLAN" ->directly connect WTX MicroStreamer
- After connected with WTX MicroStream, you can stream local music on your HiFi, soundbar, table radio, etc...
- Then enter <http://10.10.10.254/> into browser in your, open the control platform.
- Choose WiFi -> your WiFi Router->enter the correct password, connect successfully



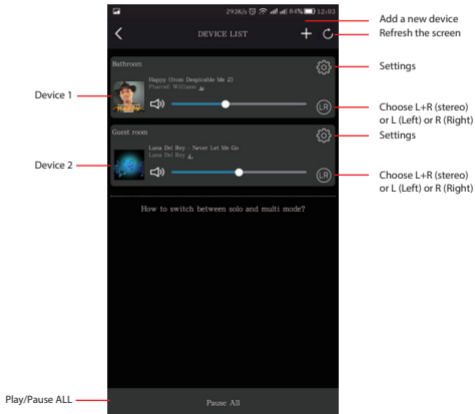
Multiroom streaming control

- Advance PlayStream can be set in several groups, such as all room play same song, 2 room play song A, 3 room play song B, each room play different songs.
- Set up Multi-Room: Press one device and hold, drag to the top of another device which you want to pair.
- Remove Multi-Room: Press the device you want to remove and hold, draw to the blank space.



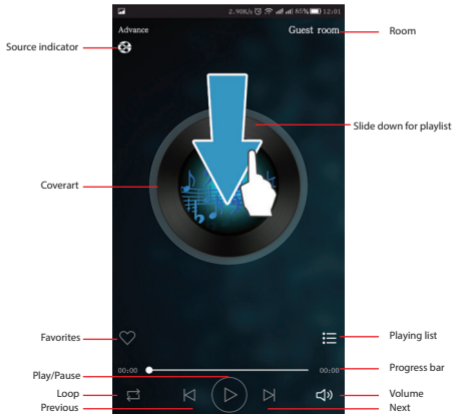
The App includes a Device Control

Device Control includes multiroom streaming control, multi-channel control, device setting, device rename, speaker info, password setup, language setting, timing power off, music alarm, 6 playlist content.



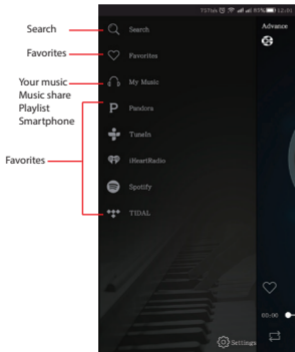
Playback menu

Playback offer a comprehensive control for music playback. It will change background color and coverart according to your music style.



Your sources

- My Music: Local stored music/Home Music Share/PlayList will be shown under this menu. MicroSD and network share will be only shown after connected and found.
- Spotify: Spotify streaming require an subscription with preimum account, then use spotify connect button to stream.



** Online music service will change accrodg to updates.*

DECLARATION OF CONFORMITY

DECLARATION OF CONFORMITY

We declare under our sole responsibility that this product, to which this declaration relates, is in conformity with the council EMC directive 2004/108/EC, the LVD directive 2006/95/EC, R&TTE 1999/5/CE.

DECLARATION DE CONFORMITE

Nous déclarons sous notre seule responsabilité que l'appareil, auquel se réfère cette déclaration, est conforme à la réglementation européenne concernant les directives suivantes :
la compatibilité électromagnétique CEM 2004/108/CE,
la basse tension 2006/95/CE, R&TTE 1999/5/CE.



Advance Paris Sarl, 13 rue du coq gaulois - 77170 Brie Comte Robert - France