

# Creek Audio Ltd.

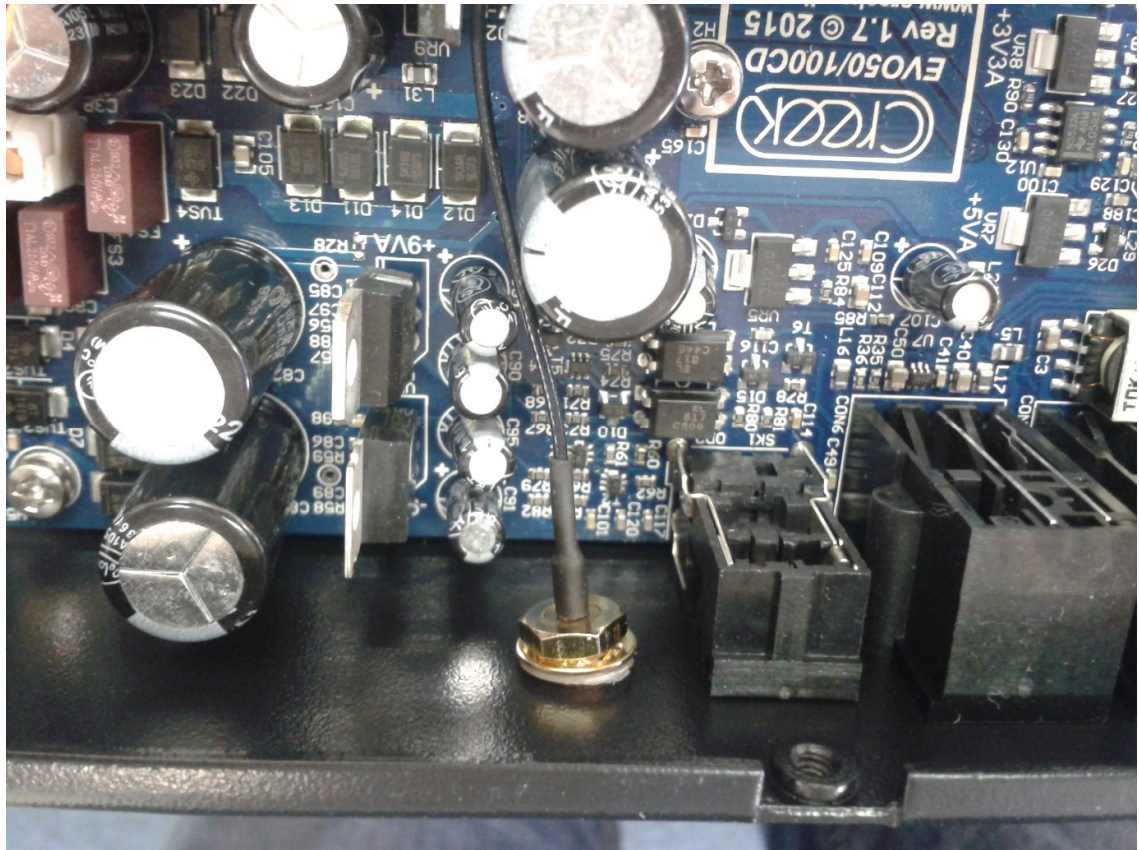
## Comet BT installation guide.

Revision 1.1/August 2016.

Thank you for purchasing a Comet BT module; please follow these steps to mount the Comet BT into your Evolution 50CD:

### Part 1. Fitting antenna socket:

1. Take the antenna socket and place the gold cutting washer onto the socket, followed by the white insulating washer.
2. Put the antenna socket through the hole in the back panel next to the remote input socket, as shown in the picture:



3. On the opposite side put the larger white insulating washer on the socket. Now fit the gold nut and screw it-up tightly, using pliers or a small spanner, like shown on the picture:

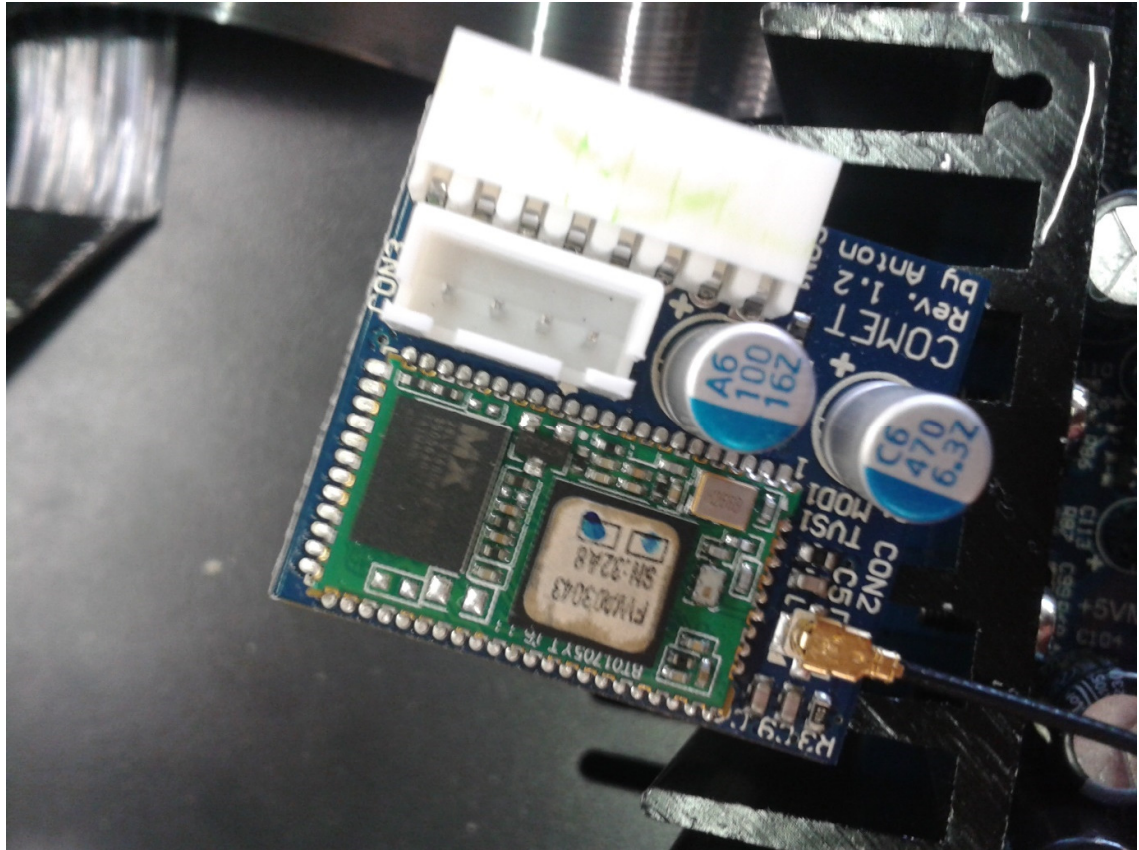


4. Mount black antenna into the socket, screw it in, then point it upwards, like shown on the picture:



Part 2. Fitting your Comet BT module inside of the Evolution 50CD:

1. Fit the small antenna plug onto the PCB socket on Comet BT, like shown on the picture:



2. Plug the Comet BT PCB into the socket on PCB with capacitors pointing towards the back panel, like shown on the picture:



Make sure that pins on both sockets match each other and no pins are left unconnected.

Congratulations! You have now successfully fitted Comet BT into your Evolution 50CD.

Part 3. Updating the software on your Evolution 50CD and connecting your Comet BT to your phone/tablet:

1. Insert the CDR with 1.05 software into the CD slot of your Evolution 50CD.
2. Wait patiently until software starts updating. You will see the progression bar. Once completed, the unit will eject the CDR and restart.



3. Select external input 6 – Bluetooth in the menu
4. Enable BT on your phone/tablet and scan for new devices
5. Look for Evolution BT and connect to it

6. Start audio playback



7. Enjoy!

Creek Audio Ltd. Hemel Hempstead, Herts, HP2 7TA England.

[www.creekaudio.com](http://www.creekaudio.com)