

 MONITOR AUDIO



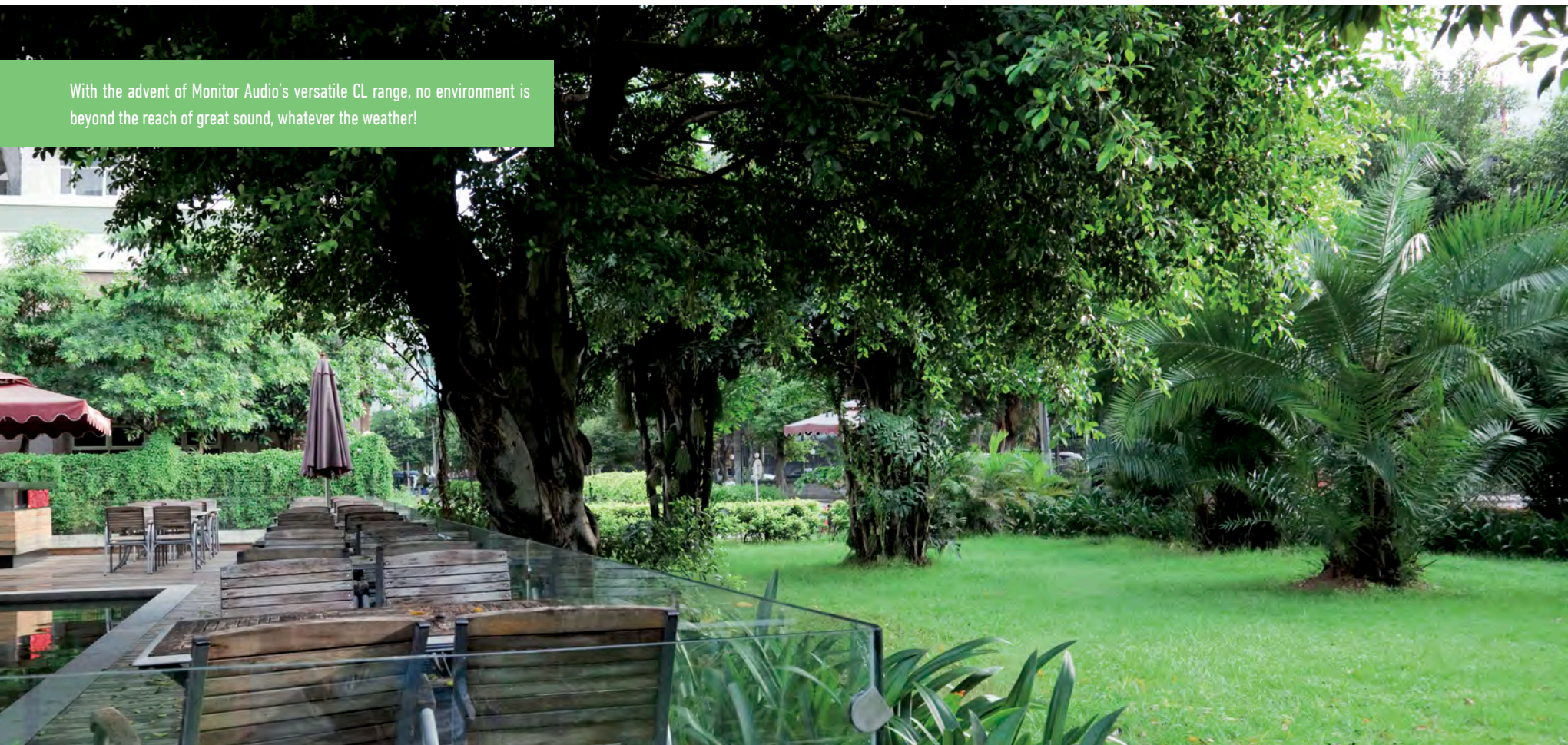
CLIMATE SERIES

# CLIMATE

Now you can enjoy high quality sound outside your home or in wet interiors with the CL range of all-weather speakers. Imbued with the design innovation of Monitor Audio's celebrated hi-fi speaker designs, the four-strong CL range will deliver crystal-clear wide bandwidth audio performance for every wet-area application. They may be custom engineered for a demanding weather-proof role, but the CL models offer the signature sound that music lovers and professional listeners the world over will recognise and appreciate.

This means that the rhythmic and utterly musical qualities of Monitor Audio's home speakers can now be enjoyed outside in the garden, by the pool, on the patio, or around bathing areas inside! What's more, the innovative use of a rear mounted 'ABR' driver provides the CL range with the superior low frequency punch that eludes ordinary all-weather speakers. In rain, wind, snow or sun, the outwardly tough but musically sensitive CL speakers will invest any occasion with a brilliant new atmosphere.

Four models to suit every application. The CL range comprises three two-way satellite speakers: the CL50, CL60 and CL80 housing 5", 6" and 8" C-CAM® bass drivers respectively; and a single stereo 6" driver design, the CL60-T2. Such a versatile choice of all-weather speakers leaves installation options wide open. Whatever the space and environment, the CL range may be used in any combination to deliver the glorious full-range sound that has won acclaim around the world. You can even enjoy great stereo sound from a single CL60-T2!

A lush garden scene with a wooden deck, a swimming pool, and a large tree. The deck is made of dark wood and has a glass railing. There are several wooden chairs and a closed patio umbrella on the deck. The pool is in the foreground, and the garden is filled with various plants and trees. A large tree with a thick trunk is prominent on the left side of the image.

With the advent of Monitor Audio's versatile CL range, no environment is beyond the reach of great sound, whatever the weather!

# ALL-WEATHER ENGINEERING



## Great sound.

Behind the smart weather-proof aluminium grilles, the CL's C-CAM tweeter and bass/mid-range driver designs will capture the detailed highs and dynamic lows of every performance. Developed and refined by Monitor Audio over many years for accurate reproduction and robust reliability, C-CAM is an innovative alloy originally conceived by the aerospace industry for use in jet engines. It's light enough to yield high efficiency and tough enough to withstand the bending forces of long driver excursions. This means that the CL range will go loud easily and deliver clean undistorted sound. Outside or inside the home, they remain genuine hi-fi speakers worthy of the legendary Monitor Audio brand.

## Robust weather-proof construction.

You can rely on Monitor Audio's meticulous engineering to protect the CL models from weather ingress. Their solid, sealed, high density polypropylene enclosures are specially treated to resist moisture and the effects of prolonged UV exposure. Aluminium grilles and rugged brackets are naturally equipped to prevent rust.

## Great style.

The CL range's tough but stylishly sculpted cabinets are available in a finely-textured white or black finish. For a precise colour match with surroundings, or for maximum contrast, the CL cabinet can be sprayed in a custom colour. A paint mask is supplied with each speaker.\*

## Installation versatility.

A key feature of the CL design is installation versatility. Mounted at either end of each CL cabinet is a heavy-duty bracket, designed for 175° of horizontal or vertical rotation in small non-slip increments. Magnetic end-caps protect the bracket terminals top and bottom, and make the process of re-positioning easy. Once installed, a CL speaker can be directed precisely for the maximum musical effect. For added flexibility a supplied installation wedge advances the angle of rotation by a further 15° to extend the choice of firing angles.

## Extra bass.

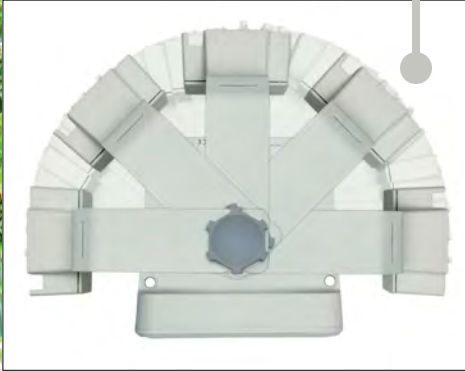
Sound quality is further optimised for the open environment through the use of an additional sealed ABR (Auxiliary Bass Radiator) driver to enrich low frequencies with extra punch and penetration.

\*Please see specifications on last page

The CL bracket was designed with hole spacing to suit a standard U.S. 'J-Box' (electrical junction box) fixing.

It also features angled-off sections and screw holes to provide corner fixing.

Importantly both the bracket and optional 15° angled wedge allow you to run a cable through rather than around them for easier and neater installation.



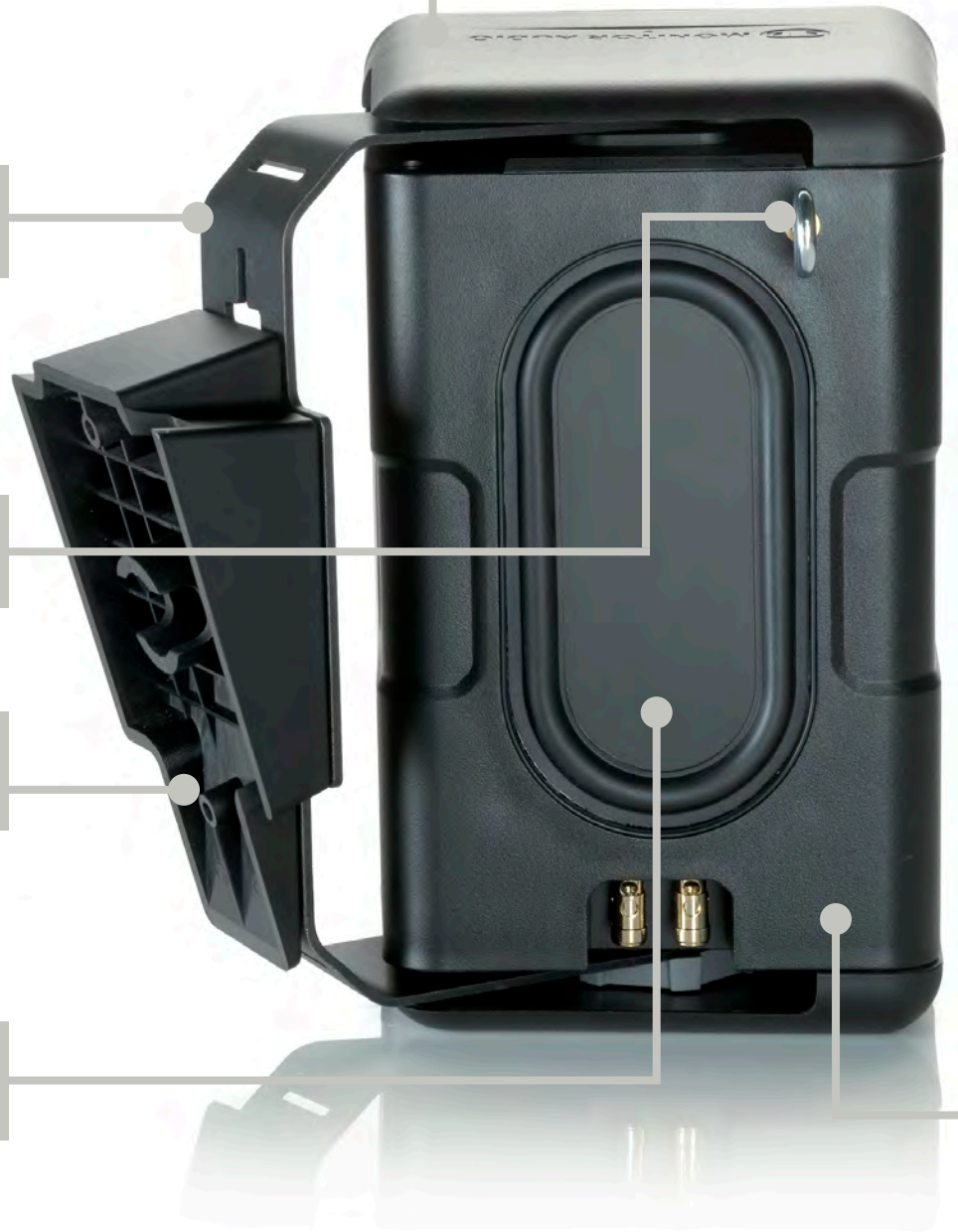
EASY FIX MAGNETIC END CAP

FULL INSTALLATION FLEXIBILITY:  
175° ROTATIONAL BRACKET

ANCHOR POINT SUPPLIED FOR SECURITY  
CHAIN ATTACHMENT

15° ANGLED WEDGE SUPPLIED FOR  
ADDITIONAL BRACKET VERSATILITY

ABR (AUXILIARY BASS RADIATOR) FOR  
ADDED LOW-FREQUENCY PUNCH



# ALL-WEATHER DESIGN



ALUMINIUM GRILLE PREVENTS RUST

HIGH PERFORMANCE C-CAM TWEETER  
AND DRIVER TECHNOLOGY FROM OUR  
HI-FI RANGES

TEXTURED WHITE AND BLACK FINISH,  
PAINTABLE TO SUIT YOUR DÉCOR  
(PAINT MASK INCLUDED)\*

FULL INSTALLATION FLEXIBILITY IN  
VERTICAL AND HORIZONTAL PLANES

ROTATIONAL 'M' LOGO TO SUIT PORTRAIT  
OR LANDSCAPE POSITIONING

SOLID, SEALED, HIGH-DENSITY  
POLYPROPYLENE ENCLOSURE  
- UV RATED.



\*Please see specifications on last page



	CL50	CL60	CL60-T2	CL80
Frequency Response	75Hz - 30kHz	63Hz - 30kHz	63Hz - 30kHz	50Hz - 30kHz
Sensitivity (dB) 1W@1m	87	88	88	89.5
Nominal Impedance (Ohms)	8	8	2 x 8	8
Maximum S.P.L. dBA (per pair)	106.8	108.8	108.8	111.1
Power Handling Single RMS (W)	80	100	2 x 50	120
Recommended Amp Requirements RMS (W)	10 - 80	15 - 100	15 - 100	20-120
System Configuration	2 - way, rear mounted ABR	2 - way, rear mounted ABR	2 - way, rear mounted ABR	2 - way, rear mounted ABR
Drive Unit Complement mm (inches)	1 x 140mm (5 <sup>1/2</sup> ) C-CAM® bass mid-range driver. 1 x 25mm (1) gold dome C-CAM tweeter.	1 x 165mm (6 <sup>1/2</sup> ) C-CAM bass mid-range driver. 1 x 25mm (1) gold dome C-CAM tweeter.	1 x 165mm (6 <sup>1/2</sup> ) C-CAM bass mid-range driver with dual voice coil. 2 x 25mm (1) gold dome C-CAM tweeter.	1 x 203mm (8) C-CAM bass mid-range driver. 1 x 25mm (1) gold dome C-CAM tweeter.
External Dimensions H x W x D mm (inches)	285 x 172.5 x 158.5 (11 <sup>1/4</sup> x 6 <sup>13/16</sup> x 6 <sup>1/4</sup> )	325 x 185 x 178.5 (12 <sup>13/16</sup> x 7 <sup>5/16</sup> x 7)	325 x 185 x 178.5 (12 <sup>13/16</sup> x 7 <sup>5/16</sup> x 7)	405 x 230 x 221 (15 <sup>15/16</sup> x 9 <sup>1/16</sup> x 8 <sup>11/16</sup> )
Total Depth Including Wall Bracket mm (inches)	210 (8 <sup>1/4</sup> )	235 (9 <sup>1/4</sup> )	235 (9 <sup>1/4</sup> )	272.5 (10 <sup>3/4</sup> )
Total Bracket Pivot Angle	87.5 degrees (from central position) on either side.			
Fixed Angle Wedge (portrait or landscape orientation)	15 degrees			
Tweeter Overload Protection	Yes			
Cable Connection	Gold plated 'push' type terminals	Gold plated 'push' type terminals	2 sets - Gold plated 'push' type terminals	Gold plated 'push' type terminals
Environmental Protection Rating	IP55			
Finishes Available	White / Black			
Weight (kg)	3.66 (8lb)	4.62 (10lb 2oz)	5.02 (11lb)	6.53 (14lb 6oz)

# SPECIFICATIONS

\*A paint shield and grille removal tool are included for your convenience. However please be aware that the Climate Series cabinet material is Polypropylene, chosen for its acoustic, thermal and weather-resistant properties. It is difficult for paint to adhere to this material, thus requiring the use of special primer and paint or paint specially designed for use on plastics such as Polypropylene. Monitor Audio does not endorse any specific brand or type of paint for this purpose. Please do not attempt to paint this product or any of its parts unless you have the skills and knowledge to complete this task successfully.

# DESIGN FOR **SOUND**

## **MONITOR AUDIO LTD**

24 Brook Road, Rayleigh

Essex, SS6 7XJ

England

Tel: + 44 (0)1268 740580

Fax: + 44 (0)1268 740589

Email: [info@monitoraudio.co.uk](mailto:info@monitoraudio.co.uk)

[monitoraudio.com](http://monitoraudio.com)

Designed in the United Kingdom