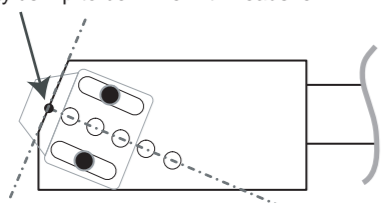


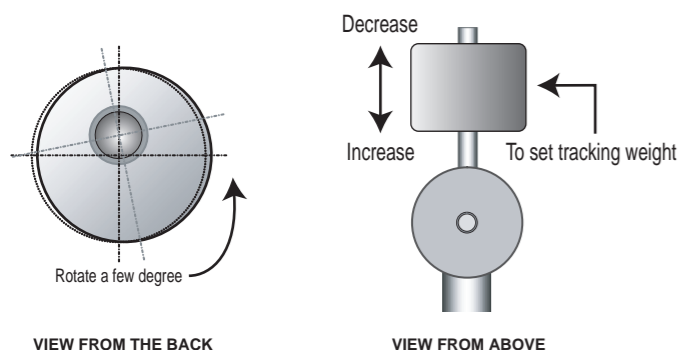
The cartridge body should be aligned to the dotted lines as shown with the stylus tip directly below the front edge of the headshell. When you have aligned the cartridge as shown then carefully tighten the screws to secure the cartridge onto the headshell.

Stylus Tip to be inline with headshell



3 Mounting the Arm on to the Turntable

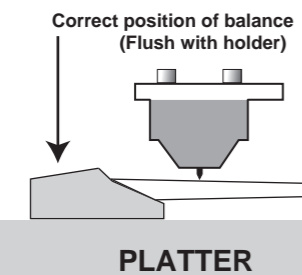
Always use the stylus guard when fitting the arm to the turntable to avoid accidental damage. Carefully insert the arm pillar into the arm pillar holder and gently push it down all the way. With the arm in its rest position and parallel to the side of the turntable tighten the VTA grub screw but do not over tighten. See Transit Screw Notes before fitting the counterweight peg. Now with the peg securely in place fit the counterweight approximately half way up. The counterweight hole is off centre and thus aids easy azimuth adjustment. Position and slightly rotate the counterweight as shown, to help headshell azimuth to be nearer to its correct setting. (Final azimuth setting will be carried out later)



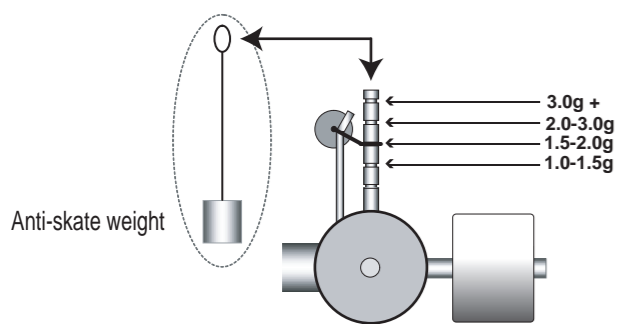
If the arm is still in its locked transit position, hold the bearing yoke and with a gentle rocking motion push it down. The bearing will disengage from its locked transit position and the unipivot spike screw will fall into its bearing seat ready for normal use. Now remove the beaded tie-wrap to release the arm.

Place the stylus balance on the platter and remove the stylus guard and check the tracking weight by gently lowering the stylus in the groove over the desired tracking weight marker (Note: 10mN = 1.0g).

To change the tracking weight, lift the stylus away and clear of the balance and gently move the counterweight towards the bearing yoke to increase or away from it to decrease the tracking weight. (Always set the tracking weight according to cartridge manufacturer's specification)



Place the Anti-skate Weight thread loop over the corresponding range for recommended anti-skate force. Pass the thread over the Anti-skate Thread Bar and let it hang/rest naturally down.

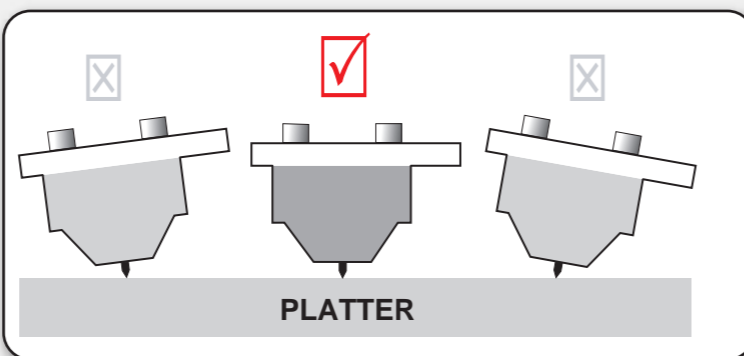


You can now fine-tune the azimuth of the headshell by gently rotating the counterweight clockwise or anti-clockwise and viewing the cartridge/headshell from the front.

(Do not move the counterweight back and forth as this will alter the tracking force)

Cartridge/headshell would be parallel to the platter/record when the azimuth is correct.

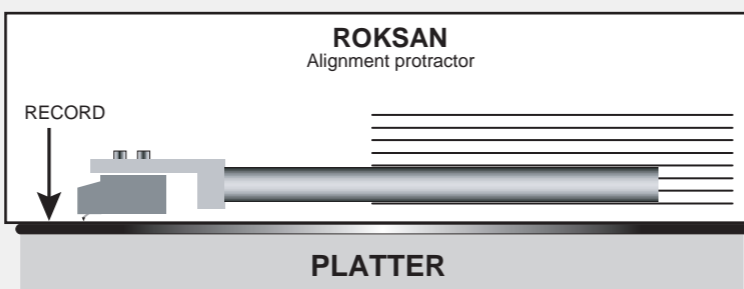
(It is important to have the anti-skate weight in place when carrying out this adjustment)



CORRECT AZIMUTH

To check the Vertical Tracking Angle (VTA), place the stylus on a flat stationary record and observe if the arm tube is parallel with the surface of the record. Slacken the VTA grub screw to lift or lower the arm in the arm pillar holder to change the VTA. **(Always hold the arm by the armrest plate and not the bearing yoke while carrying out any adjustments)**

Tighten the grub screw once the VTA is set correctly. Use the Roksan Alignment Protractor to assist you in VTA and cartridge alignment.



NOTE:

The Unipivot Spike screw can also be adjusted up or down (1-1.5mm max.) to fine tune the VTA. Take extra care to avoid damage to the pivot bearing if you attempt to use this adjustment.

REPACKING

To re-pack the tonearm or to transport your turntable with the tonearm mounted, first remove the counter weight and lock the bearing yoke/arm tube in its transit position. Hold the bearing yoke and gently pull it up with a gentle rocking motion. Once you will feel a positive click/stop (after about 3-5mm) stop pulling up. The bearing yoke is now locked in its transit position with the unipivot spike safely away from its bearing seat.

To secure the tonearm, pass the beaded tie-wrap through the armrest hole and tie it around the arm tube. See Transit Screw Notes for removing the C/W Peg and locking the arm in its transit position.

Carefully remove the anti-skate weight and place it in the packing. Now the arm is safe for transit or removal from the turntable.

To re-pack it with the turntable, refer to the packaging section of your turntable user manual. To remove the arm, unplug the arm cable from the bottom of the arm pillar, slacken the VTA grub screw and gently pull the arm out of the arm pillar holder. With the arm in its locked transit position, place it securely in its packaging

NOTE:

The counterweight is very heavy and must be properly secured in the packing to avoid damage to the arm or the cartridge.

Guarantee

There are no user-serviceable parts inside your Roksan Nima Unipivot Tonearm. If a fault should develop, refer any servicing to your appointed ROKSAN dealer, distributor or ROKSAN approved service agent.

Your Roksan Nima Unipivot Tonearm is guaranteed against any defect in materials and workmanship for a period of **two years** from the date of purchase.

This guarantee only becomes effective if the warranty card is validated (by the ROKSAN retailer from whom the equipment was purchased) and returned to ROKSAN within **28 days** of purchase.

This guarantee excludes:

1. Damage caused due to accident, misuse, neglect and incorrect installation, adjustment or repair.
2. Liability for damage or loss during transit from the retailer or purchaser to ROKSAN or its authorised distributor for the purposes of repair or inspection.

Carriage costs to ROKSAN shall be borne by the consignor.

All claims under this guarantee must be made through an authorised ROKSAN retailer.

If equipment returned for repair to ROKSAN is found on inspection to comply with the product specification ROKSAN reserves the right to make a charge for examination and return carriage.

ROKSAN AUDIO LIMITED UK
TEL. +44 (0)208 900 6801
+44 (0)208 900 6802
FAX. +44 (0)208 900 0734

Specification

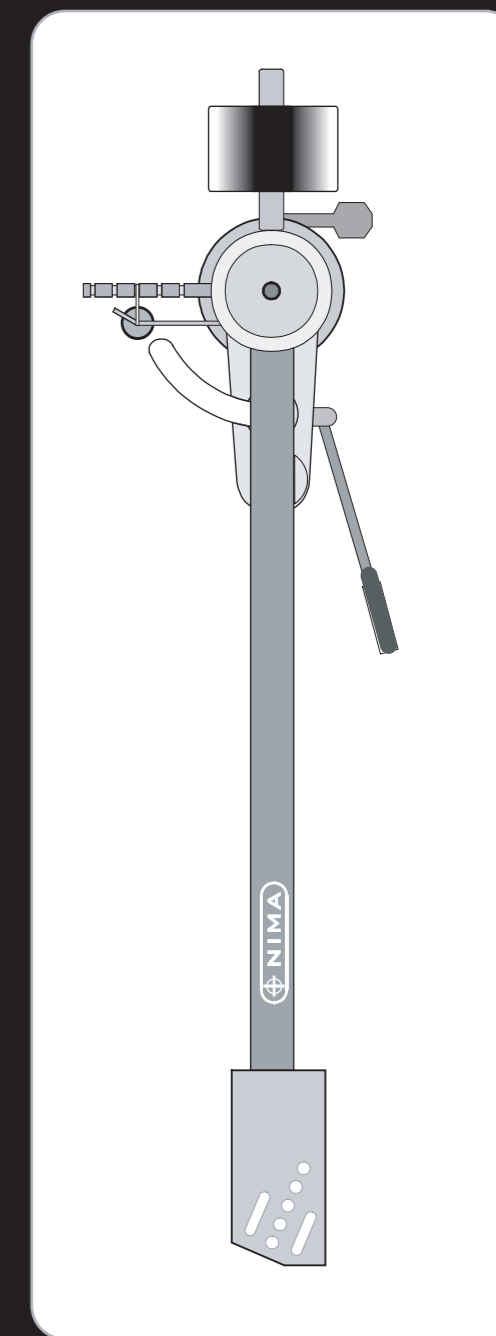
Bearing.....	Stainless Steel Unipivot
Bearing Yoke.....	Acrylic
Arm Tube.....	Aluminium Alloy
Headshell.....	Acrylic
Effective Length.....	240mm
Overhang.....	17.5mm
Distance from Record Centre.....	222.5mm
Headshell Offset Angle.....	22.9 Degree
Effective Mass.....	11 g
Mounting Hole Diameter.....	23mm
Arm Board Thickness.....	7-25mm (max.)
Recommended Cartridge Weight.....	5-12 g
Recommended Tracking Weight.....	1.5-3.5 g
Internal Wiring.....	Special Roksan Flexible PCB
Tonearm Cable.....	Shielded Coaxial with Grounding wire
Connectors.....	5-Pin Gold Plated to RCA Gold Plated

All specifications are liable to change without prior notice. E & O.E.

Printed in England
Designed by



UNIPIVOT TONEARM



USERMANUAL

www.roksan.co.uk



©2005 Roksan Audio Limited



UNIPIVOT TONEARM

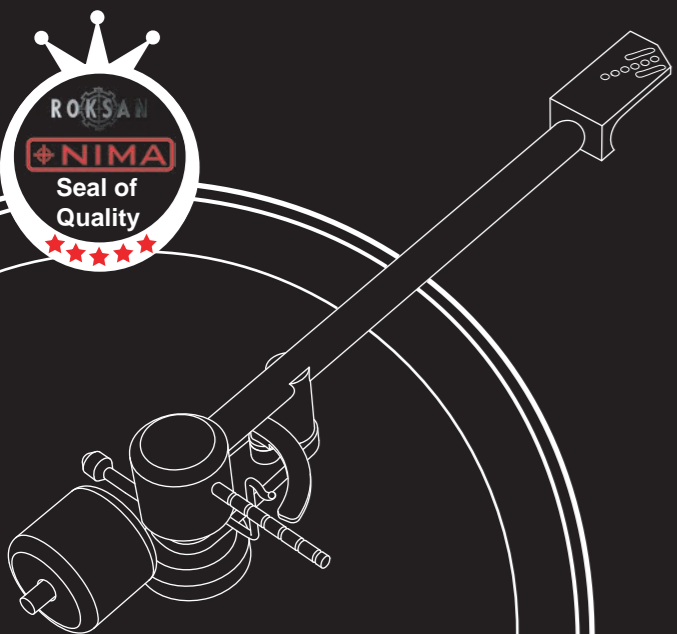
Congratulations on your purchase of the Roksan NIMA unipivot tonearm. This tonearm is designed and manufactured to the highest specification and rigorously tested to reward you many years of listening pleasure.

Your NIMA unipivot tonearm is an important part of your vinyl replay system. Its correct installation, set-up and operation will have a profound influence on the sonic performance of the entire hi-fi installation.

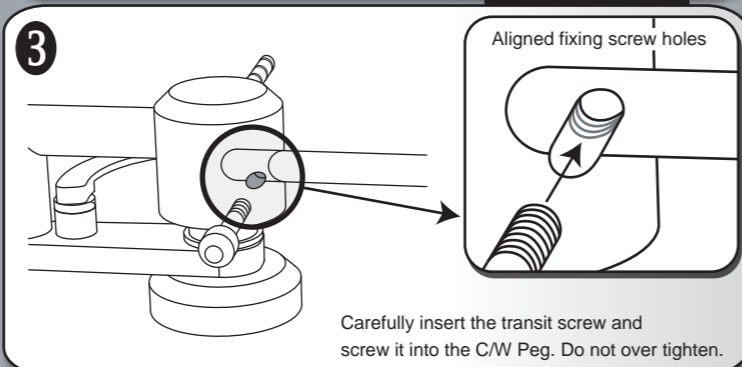
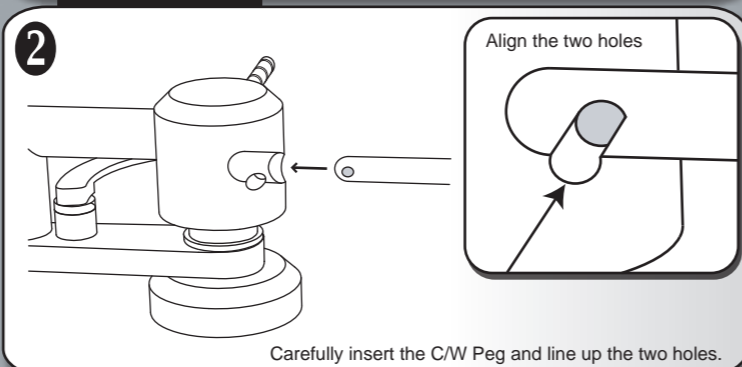
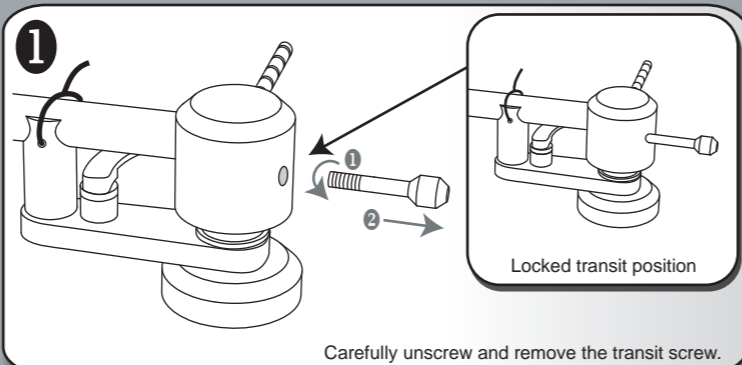
Please read the contents of this manual thoroughly. It will help you to understand your record playing equipment better and enhance your listening pleasure.

QUICK START

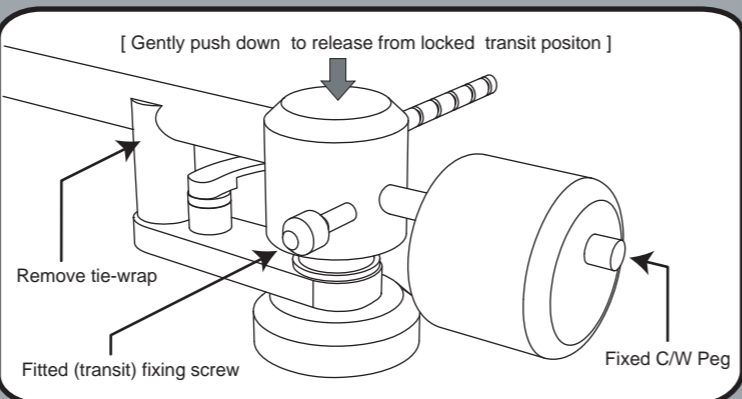
1. Remove Tonearm from the packaging.
2. Mount the Arm Pillar Holder to the arm board.
3. Fit the cartridge to the Headshell.
4. Fit Tonearm to the Arm Pillar Holder.
5. Release Tonearm from locked transit position.
6. Fit the Counterweight Peg and Counterweight.
7. Set initial Cartridge tracking weight.
8. Fit the Anti-skate Weight.
9. Set Cartridge alignment.
10. Set vertical tracking angle (VTA).
11. Set final tracking weight.
12. Fit Arm cable.



Transit Screw notes



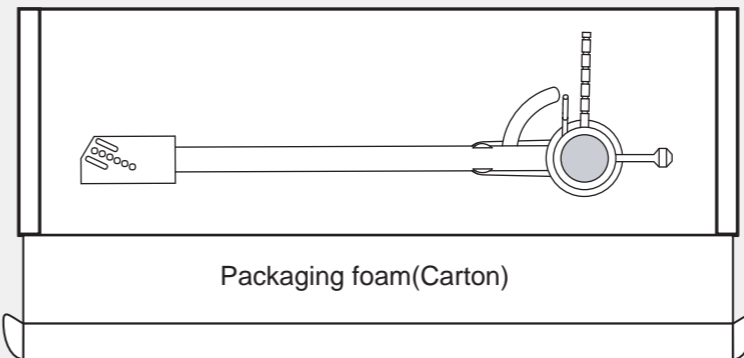
Perspective view of NIMA



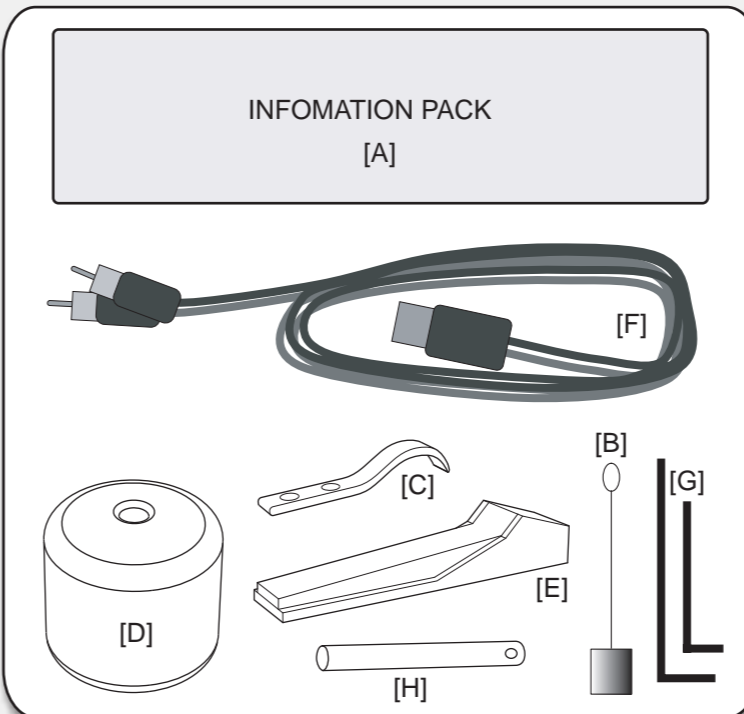
- NOTE:**
- Remove the transit screw and C/W Peg.
 - Gently pull the bearing yoke up to lock it in its transit position.
 - Refit the transit screw from the back.
 - Secure the arm tube with the releasable tie-wrap.
- See above**

PACKAGING

Your NIMA is carefully and thoughtfully packed so that the packaging can be re-used whenever you need to transport it. Please store all the packaging material for future use.



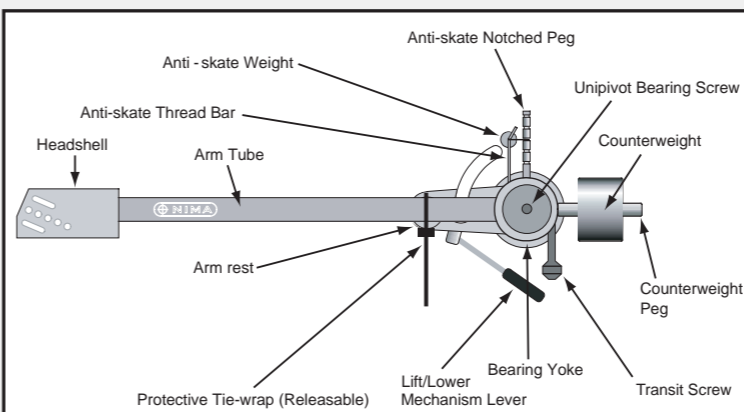
NOTE: PACKAGING NOT INCLUDED WHEN SUPPLIED WITH RADIUS5 RECORD PLAYER



- A : Information pack
- B : Anti-skate weight
- C : Finger lift
- D : Counterweight
- E : Stylus balance
- F : Tonearm cable
- G : Allen key
- H : Counterweight peg

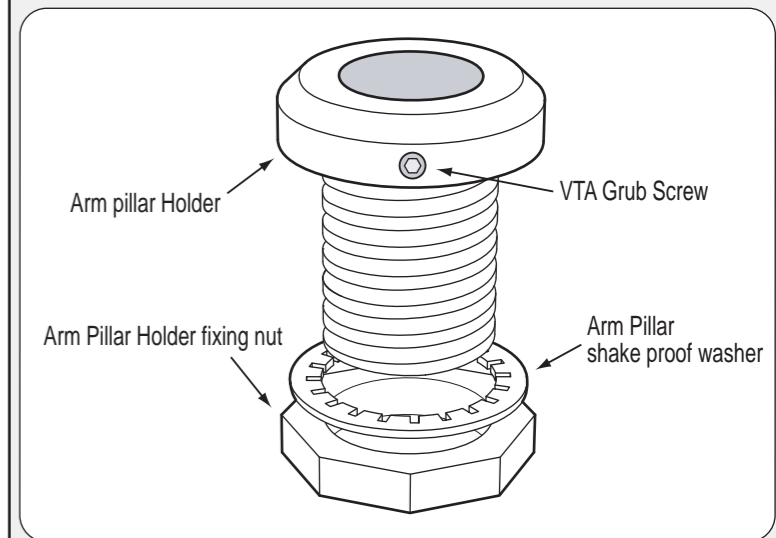
ASSEMBLY

There are three parts to the assembly of your NIMA tonearm. (Note: With Radius5 the arm pillar holder is already fitted to the record player) Do not remove the protective tie-wrap around the arm tube. Place the arm in a safe place until later. Be extra careful not to damage the anti-skate thread bar.

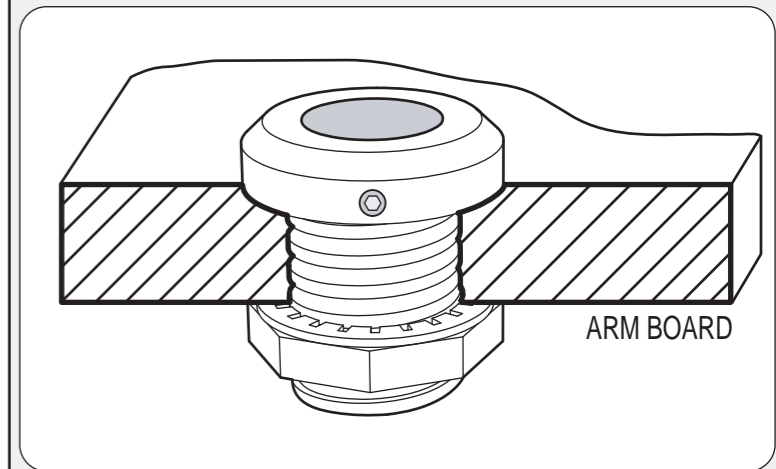


1 Mounting the Arm Pillar Holder

The arm pillar holder fits into a hole 22-23mm diameter and 222-223mm away from the record centre. (Note: This is identical to the Roksan Tabriz or Artemiz mounting hole and position) To remove the arm from the arm pillar holder, use the 1.5mm A/F Allen key supplied and gently slacken the VTA (Vertical Tracking Angle) adjustment grub screw.



Fit the Arm pillar holder through the arm hole, place the shake proof washer and fasten using the fixing nut such that the VTA grub screw is on the right hand side of the tone arm when viewed from the front (this is to allow easy access for VTA adjustment). To keep this orientation while you tighten the fixing nut, use the 1.5mm Allen key as a gentle lever. The fixing nut requires a 27mm A/F spanner, not supplied.



2 Mounting the Cartridge

The tonearm is sent with its Bearing Yoke pulled up and locked in transit position with transit screw and the Protective Tie-wrap securely holding the Arm Tube. This unique design protects the bearing in transit and keeps the arm rigid while mounting the phono cartridge onto the headshell. Use good quality stainless steel M2.5 socket head cap screws and nuts to mount the cartridge but do not tighten them fully until alignment has been completed. Carefully remove the tape holding the cartridge tags and avoid pulling the tags as they may break. Following the standard colour convention carefully push the tags onto the cartridge pins.

- Right Channel (+) RED
- Right Channel (-) GREEN
- Left Channel (+) WHITE
- Left Channel (-) BLUE

- NOTE:**
- If you wish to fit the finger lift, place it above the headshell and then run the bolts through the holes. Always check the clearance between the finger lift and dust cover if applicable.

Refer to the figure below for easy alignment of the cartridge in the headshell. **(Always hold the arm by the arm tube and not the bearing yoke when mounting the cartridge)**